

EXT is typically used in combination with (differential) pressure transmitters for level, flow and (absolute) pressure measurement, in those applications where the diaphragm need to be flush with the vessel wall or where insulation layers need to be passed.


STANDARD EXECUTION

DIAPHRAGM	BODY	MOUNTING CONNECTION
AISI 316(L)	AISI 316(L)	top (axial)
FACING	TYPE	STANDARD LENGTH
RF	type B1	50/100/150/200 mm

FLANGED PROCESS CONNECTIONS
ASME B16.5

size	rating	dD
1.5"	cl. 150 - cl. 600	32.0mm
2"	cl. 150 - cl. 2500	44.0mm
2.5"	cl. 150 - cl. 2500	44.0mm
3"	cl. 150 - cl. 2500	72.0mm
4"	cl. 150 - cl. 2500	81.0mm

EN 1092-1

size	rating	dD
DN50	PN10-100	44.0mm
DN80	PN10-100	72.0mm
DN100	PN10-100	81.0mm

JIS B2220

size	rating	facing	dD
40 (1.5")	10K – 20K	RF	32.0mm
50 (2")	10K – 20K	RF	44.0mm
80 (3")	10K – 20K	RF	81.0mm
90 (3.5")	10K – 20K	RF	81.0mm
100(4")	10K – 20K	RF	81.0mm

WETTED PARTS, BODY MATERIALS, AND FACING OPTIONS

body material	diaphragm material
AISI 316(L)	AISI 316(L) AISI 304L AISI 321 AISI 316 UG Hastelloy C-276
AISI 904(L)	AISI 904(L)
Hastelloy B2	Hastelloy B2
Hastelloy C-276	Hastelloy C-276
Duplex F44	6Mo
Duplex F51/F60	Duplex 2205
Duplex F53	Super Duplex 2507
Duplex F55	Super Duplex 2507
Inconel 600	Inconel 600
Inconel 625	Inconel 625
Inconel 825	Inconel 825
Monel 400	Monel 400
Nickel 201	Nickel 201
Titanium Gr. 2	Titanium Gr. 2
Zirconium 702	Zirconium 702

facing (ASME B16.5)

	rating
RF	Ra 3.2-6.3 µm
RJF	Ra <1.6 µm
LMF	Ra 3.2-6.3 µm
SMF	Ra <3.2 µm
LTF	Ra <3.2 µm
STF	Ra <3.2 µm
LGF	Ra <3.2 µm
SGF	Ra <3.2 µm

facing type (EN 1092-1)

	rating
B1	Ra 3.2-12.5 µm
A	Ra 3.2-12.5 µm
B2	Ra 0.8-3.2 µm
C	Ra 0.8-3.2 µm
D	Ra 0.8-3.2 µm
E	Ra 3.2-12.5 µm
F	Ra 3.2-12.5 µm

COATING AND OTHER OPTIONS

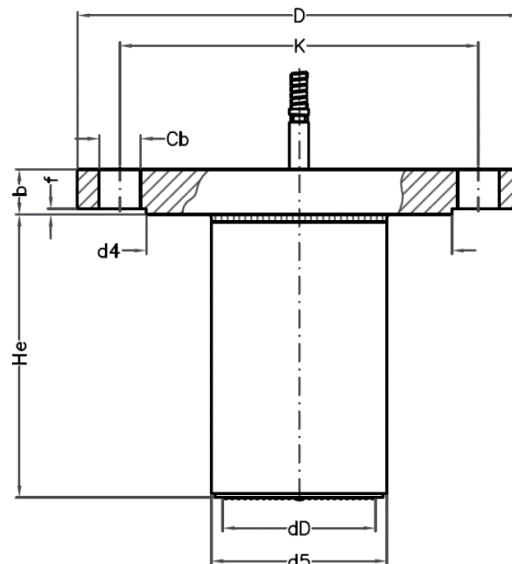
COATINGS

- gold: 25 μm / 40 μm hydrogen permeation protection (diaphragm only)
- PTFE / ECTFE for anti-stick purpose only
- FEP / PFA
- thermal spray

OTHER OPTIONS

- set of handles welded on side of flange
- heavy duty capillary tube
- TR - temperature reducer
- TC - temperature compensator
- capillary side mounted (radial)
- PTFE sleeve / lining
- customized length and diameter
- degreased wetted parts
- polished extension
- jacket holes
- tapered extension

DRAWING AND DIMENSIONS STANDARD EXECUTIONS



ASME B16.5 - RF FACING

size	rating	facing	dD	b	D	d4	d5	f	He	K	Cb / pcs
1.5"	150#	RF	32.0	17.9	125.0	73.0	37.0	2.0	various	98.4	15.9 / 4x
1.5"	300#	RF	32.0	21.1	155.0	73.0	37.0	2.0	various	114.3	22.3 / 4x
1.5"	400-600#	RF	32.0	29.3	155.0	73.0	37.0	7.0	various	114.3	22.3 / 4x
2"	150#	RF	44.0	19.5	150.0	92.1	48.0	2.0	various	120.7	19.1 / 4x
2"	300#	RF	44.0	22.7	165.0	92.1	48.0	2.0	various	127.0	19.1 / 8x
2"	400-600#	RF	44.0	32.4	165.0	92.1	48.0	7.0	various	127.0	19.1 / 8x
2"	900-1500#	RF	44.0	45.1	215.0	92.1	48.0	7.0	various	165.1	25.4 / 8x
2"	2500#	RF	44.0	57.9	235.0	92.1	48.0	7.0	various	171.4	28.6 / 8x
2.5"	150#	RF	44.0	22.7	180.0	104.8	48.0	2.0	various	139.7	19.1 / 8x
2.5"	300#	RF	44.0	25.9	190.0	104.8	48.0	2.0	various	149.2	22.3 / 8x
2.5"	400-600#	RF	44.0	35.6	190.0	104.8	48.0	7.0	various	149.2	22.3 / 8x
2.5"	900-1500#	RF	44.0	48.3	245.0	104.8	48.0	7.0	various	190.5	28.6 / 8x
2.5"	2500#	RF	44.0	64.2	265.0	104.8	48.0	7.0	various	196.8	31.8 / 8x
3"	150#	RF	72.0	24.3	190.0	127.0	76.0	2.0	various	152.4	19.1 / 4x
3"	300#	RF	72.0	29.0	210.0	127.0	76.0	2.0	various	168.3	22.3 / 8x
3"	400-600#	RF	72.0	38.8	210.0	127.0	76.0	7.0	various	168.3	22.3 / 8x
3"	900#	RF	72.0	45.1	240.0	127.0	76.0	7.0	various	190.5	25.4 / 8x
3"	1500#	RF	72.0	54.7	265.0	127.0	76.0	7.0	various	203.2	31.8 / 8x
3"	2500#	RF	72.0	73.7	305.0	127.0	76.0	7.0	various	228.6	34.9 / 8x
4"	150#	RF	81.0	24.3	230.0	157.2	93.0	2.0	various	190.5	19.1 / 8x
4"	300#	RF	81.0	32.2	255.0	157.2	93.0	2.0	various	200.0	22.3 / 8x
4"	400#	RF	81.0	42.0	255.0	157.2	93.0	7.0	various	200.0	25.4 / 8x
4"	600#	RF	81.0	45.1	275.0	157.2	93.0	7.0	various	215.9	25.4 / 8x
4"	900#	RF	81.0	51.5	290.0	157.2	93.0	7.0	various	235.0	31.8 / 8x
4"	1500#	RF	81.0	61.0	310.0	157.2	93.0	7.0	various	241.3	34.9 / 8x
4"	2500#	RF	81.0	83.2	355.0	157.2	93.0	7.0	various	273.0	41.3 / 8x

All dimensions in mm

EN 1092-1 - TYPE B1

size	rating	type	dD	b	D	d4	d5	f	He	K	Cb / pcs
DN50	PN10-16	B1	44.0	18.0	165.0	102.0	48.0	3.0	various	125.0	18.0 / 4x
DN50	PN25-40	B1	44.0	20.0	165.0	102.0	48.0	3.0	various	125.0	18.0 / 4x
DN50	PN63	B1	44.0	26.0	180.0	102.0	48.0	3.0	various	135.0	22.0 / 4x
DN50	PN100	B1	44.0	28.0	195.0	102.0	48.0	3.0	various	145.0	26.0 / 4x
DN80	PN10-16	B1	72.0	20.0	200.0	138.0	76.0	3.0	various	160.0	18.0 / 8x
DN80	PN25-40	B1	72.0	24.0	200.0	138.0	76.0	3.0	various	160.0	18.0 / 8x
DN80	PN63	B1	72.0	28.0	215.0	138.0	76.0	3.0	various	170.0	22.0 / 8x
DN80	PN100	B1	72.0	32.0	230.0	138.0	76.0	3.0	various	180.0	26.0 / 8x
DN100	PN10-16	B1	81.0	20.0	220.0	158.0	93.0	3.0	various	180.0	18.0 / 8x
DN100	PN25-40	B1	81.0	24.0	235.0	162.0	93.0	3.0	various	190.0	22.0 / 8x
DN100	PN63	B1	81.0	30.0	250.0	162.0	93.0	3.0	various	200.0	26.0 / 8x
DN100	PN100	B1	81.0	36.0	265.0	162.0	93.0	3.0	various	210.0	30.0 / 8x

All dimensions in mm

JIS B2220 - RF FACING

size	rating	facing	dD	b	D	d4	d5	f	He	K	Cb / pcs
40	10K	RF	32.0	18.0	140.0	81.0	37.0	2.0	various	105.0	19.0 / 4x
40	16K	RF	32.0	18.0	140.0	81.0	37.0	2.0	various	105.0	19.0 / 4x
40	20K	RF	32.0	20.0	140.0	81.0	37.0	2.0	various	105.0	19.0 / 4x
50	10K	RF	44.0	18.0	155.0	96.0	48.0	2.0	various	120.0	19.0 / 4x
50	16K	RF	44.0	18.0	155.0	96.0	48.0	2.0	various	120.0	19.0 / 8x
50	20K	RF	44.0	20.0	155.0	96.0	48.0	2.0	various	120.0	19.0 / 8x
80	10K	RF	81.0	20.0	185.0	126.0	93.0	2.0	various	150.0	19.0 / 8x
80	16K	RF	81.0	22.0	200.0	132.0	93.0	2.0	various	160.0	23.0 / 8x
80	20K	RF	81.0	24.0	200.0	132.0	93.0	2.0	various	160.0	23.0 / 8x
90	10K	RF	81.0	20.0	195.0	136.0	93.0	2.0	various	160.0	19.0 / 8x
90	16K	RF	81.0	22.0	210.0	145.0	93.0	2.0	various	170.0	23.0 / 8x
90	20K	RF	81.0	26.0	210.0	145.0	93.0	2.0	various	170.0	23.0 / 8x
100	10K	RF	81.0	20.0	210.0	151.0	93.0	2.0	various	175.0	19.0 / 8x
100	16K	RF	81.0	24.0	225.0	160.0	93.0	2.0	various	185.0	23.0 / 8x
100	20K	RF	81.0	26.0	225.0	160.0	93.0	2.0	various	185.0	23.0 / 8x

All dimensions in mm



Holland – United Kingdom – Romania – India – Thailand – Dubai – USA

To our knowledge, the information contained herein is accurate as of the date of this document. However neither Badotherm, nor its affiliates makes any warranty, express or limited, or accepts any liability in connection with this information or its use. This information is for technical skilled persons at their own discretion and risk and does not relate to the use of this product in combination with any other product. The user alone finally determines suitability of any information or material in contemplated use, the manner of use and whether any patents are infringed. This information gives typical properties only.

Badotherm reserves the right to make changes to the specifications and materials without prior notice. The latest version of the datasheet can be found on www.badotherm.com.

© 2015 Badotherm, all rights reserved. Trademarks and/or other products referenced herein are either trademarks or registered trademarks of Badotherm.