

The FSO-EXT is typically used in combination with (differential) pressure transmitters for level, flow and pressure measurement, in those applications where the diaphragm need to be flush with the vessel wall or where insulation layers need to be passed. The FSO-EXT is recommended when extended seals are required fully in exotic materials and/or when special grade flanges are required.


STANDARD EXECUTION

DIAPHRAGM	BODY	MOUNTING CONNECTION
AISI 316(L)	AISI 316(L)	top (axial)
FACING	FACING TYPE	STANDARD LENGTH
RF	B1	50/100/150/200 mm

FLANGED PROCESS CONNECTIONS
ASME B16.5

size	rating	facing	dD
2"	cl. 150 - cl. 2500	RF	44mm
3"	cl. 150 - cl. 2500	RF	72mm
4"	cl. 150 - cl. 2500	RF	81mm

EN 1092-1

size	rating	type	dD
DN50	PN10-100	B1	44mm
DN80	PN10-100	B1	72mm
DN100	PN10-100	B1	81mm

WETTED PARTS, BODY MATERIALS, AND FACING OPTIONS

diaphragm material	body material
AISI 316(L)	AISI 316(L)
AISI 304(L)	
AISI 321	
AISI 316 UG	
Hastelloy C-276	
Monel 400	Monel 400
Hastelloy C-276	Hastelloy C-276
Duplex 2205	Super Duplex / Duplex
Inconel 600	Inconel 600
Titanium Gr. 1	Titanium Gr. 2
Nickel 201	Nickel 201

facing (ASME B16.5)

RF	Ra 3.2-6.3 µm
RJF	Ra <1.6 µm
LMF	Ra 3.2-6.3 µm
SMF	Ra <3.2 µm
LTF	Ra <3.2 µm
STF	Ra <3.2 µm
LGF	Ra <3.2 µm
SGF	Ra <3.2 µm

facing type (EN 1092-1)

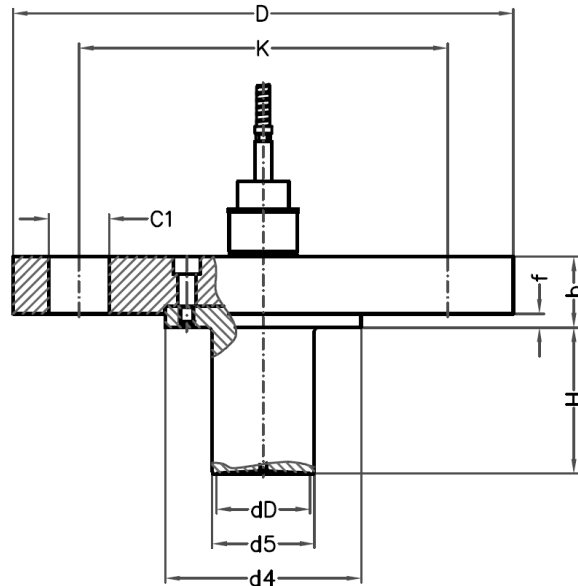
B1	Ra 3.2-12.5 µm
B2	Ra 0.8-3.2 µm
C	Ra 0.8-3.2 µm
D	Ra 0.8-3.2 µm
E	Ra 3.2-12.5 µm
F	Ra 3.2-12.5 µm

COATING AND OTHER OPTIONS
COATINGS

- gold: 25 µm / 40 µm hydrogen permeation protection (diaphragm only – page 120)
- PTFE / ECTFE for anti stick purpose only
- FEP / PFA
- thermal spray

OTHER OPTIONS

- set of handles welded on side of flange [page 113](#)
- heavy duty capillary tube [page 113/123](#)
- TR - temperature reducer [page 114](#)
- TC - temperature compensator [page 114/121](#)
- capillary side mounted (radial)
- PTFE sleeve / lining
- customized length and diameter
- degreased wetted parts
- polished extension
- tapered extension
- cover flange in exotic material

DRAWING AND DIMENSIONS STANDARD EXECUTIONS

ASME B16.5 - RF FACING

size	rating	facing	dD	b	D	f	d4	d5	H	K	C1 / pcs	C1 (inch)
2"	cl. 150	RF	44	19	150	2	92	48	various	121	19 / 4x	3/4"
2"	cl. 300	RF	44	23	165	2	92	48	various	127	19 / 8x	3/4"
2"	cl. 400-600	RF	44	32	165	7	92	48	various	127	19 / 8x	3/4"
2"	cl. 900-1500	RF	44	45	215	7	92	48	various	165	25 / 8x	1"
2"	cl. 2500	RF	44	57	235	7	92	48	various	171	29 / 8x	1 1/8"
3"	cl. 150	RF	72	24	190	2	127	76	various	152	19 / 4x	3/4"
3"	cl. 300	RF	72	29	210	2	127	76	various	168	22 / 8x	7/8"
3"	cl. 400-600	RF	72	39	210	7	127	76	various	168	22 / 8x	7/8"
3"	cl. 900	RF	72	45	240	7	127	76	various	191	25 / 8x	1"
3"	cl. 1500	RF	72	55	265	7	127	76	various	203	32 / 8x	1 1/4"
3"	cl. 2500	RF	72	74	305	7	127	76	various	229	35 / 8x	1 3/8"
4"	cl. 150	RF	81	24	230	2	157	93	various	191	19 / 8x	3/4"
4"	cl. 300	RF	81	32	255	2	157	93	various	200	22 / 8x	7/8"
4"	cl. 400	RF	81	42	255	7	157	93	various	200	25 / 8x	1"
4"	cl. 600	RF	81	45	275	7	157	93	various	216	25 / 8x	1"
4"	cl. 900	RF	81	52	290	7	157	93	various	235	32 / 8x	1 1/4"
4"	cl. 1500	RF	81	61	310	7	157	93	various	241	35 / 8x	1 3/8"
4"	cl. 2500	RF	81	83	355	7	157	93	various	273	42 / 8x	1 5/8"

All dimensions in mm

EN 1092-1 - TYPE B1

size	rating	type	dD	b	D	f	d4	d5	H	K	C1 / pcs
DN50	PN10-40	B1	44	20	165	3	102	48	various	125	18 / 4x
DN50	PN63	B1	44	26	180	3	102	48	various	135	22 / 4x
DN50	PN100	B1	44	28	195	3	102	48	various	145	26 / 4x
DN80	PN10-40	B1	72	24	200	3	138	76	various	160	18 / 8x
DN80	PN63	B1	72	28	215	3	138	76	various	170	22 / 8x
DN80	PN100	B1	72	32	230	3	138	76	various	180	26 / 8x
DN100	PN10-16	B1	81	20	220	3	158	93	various	180	18 / 8x
DN100	PN25-40	B1	81	24	235	3	162	93	various	190	22 / 8x
DN100	PN63	B1	81	30	250	3	162	93	various	200	26 / 8x
DN100	PN100	B1	81	36	265	3	162	93	various	210	30 / 8x

All dimensions in mm



Holland – United Kingdom – Romania – India – Thailand – Dubai – USA

To our knowledge, the information contained herein is accurate as of the date of this document. However neither Badotherm, nor its affiliates makes any warranty, express or limited, or accepts any liability in connection with this information or its use. This information is for technical skilled persons at their own discretion and risk and does not relate to the use of this product in combination with any other product. The user alone finally determines suitability of any information or material in contemplated use, the manner of use and whether any patents are infringed. This information gives typical properties only.

Badotherm reserves the right to make changes to the specifications and materials without prior notice. The latest version of the datasheet can be found on www.badotherm.com.

© 2001 Badotherm, all rights reserved. Trademarks and/or other products referenced herein are either trademarks or registered trademarks of Badotherm.