

Flush ring is used for flushing solution combined with diaphragm seals. This type of flushing ring is clamped between process nozzle and diaphragm seal. The flushing ring can be combined with the BF and BRf seal as well as the BC and BRC type.



STANDARD EXECUTION

BODY	GASKET SURFACE FINISH	FACING	TYPE
AISI 316(L)	Ra 3.2-6.3 µm	RF	type B1

FLUSH CONNECTION

1/4" NPT

FLANGED PROCESS CONNECTIONS

ASME B16.5

size	rating
1"	cl. 150 - cl. 2500
1,5"	cl. 150 - cl. 2500
2"	cl. 150 - cl. 2500
3"	cl. 150 - cl. 2500
4"	cl. 150 - cl. 2500

Note: RJF facing gasket surface finish: <1.6 µm

API ISO 10423

size	rating	facing
1-13/16"	69 - 138 MPa	6BX - RJF
2-1/16"	13.8 - 34.5 MPa	6B - RJF
2-1/16"	69 - 138 MPa	6BX - RJF
2-9/16"	13.8 - 34.5 MPa	6B - RJF
2-9/16"	69 - 138 MPa	6BX - RJF
3-1/8"	13.8 - 34.5 MPa	6B - RJF
3-1/8"	39 - 138 MPa	6BX - RJF

Note: API 6A facing gasket surface finish: <1.6 µm

EN 1092-1

size	rating
DN25	PN10 - PN400
DN40	PN10 - PN400
DN50	PN10 - PN400
DN80	PN10 - PN400
DN100	PN10 - PN400

JIS B2220

size	rating	facing
25 (1")	5K - 20K	RF
32 (1,25")	5K - 20K	RF
40 (1,5")	5K - 20K	RF
50 (2")	5K - 20K	RF
65 (2,5")	5K - 20K	RF
80 (3")	5K - 20K	RF
90 (3,5")	5K - 20K	RF
100 (4")	5K - 20K	RF

Note: JIS RF facing roughness is Ra 3.2-6.3 µm

FLUSHING CONNECTIONS

size	thread	norms
1/4"	NPT	ANSI B1.20.1
1/4"	BSP	ISO 228
1/2"	NPT	ANSI B1.20.1
1/2"	BSP	ISO 228

BODY MATERIALS, AND FACING OPTIONS

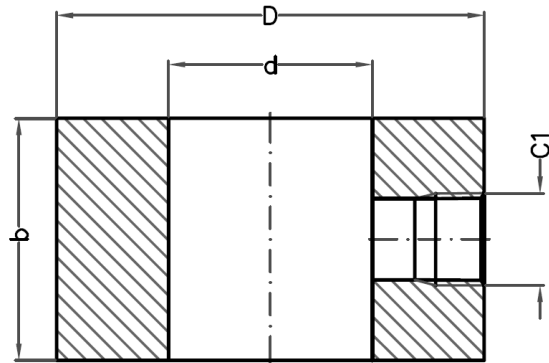
body material
AISI 316(L)
Monel 400
Hastelloy C-276
Duplex
Super Duplex
Inconel 600

facing (ASME B16.5)	
RF	Ra 3.2-6.3 µm
RJF	Ra <1.6 µm
LMF	Ra 3.2-6.3 µm
SMF	Ra <3.2 µm
LTF	Ra <3.2 µm
STF	Ra <3.2 µm
LGF	Ra <3.2 µm
SGF	Ra <3.2 µm
LFF	Ra 3.2-6.3 µm
SFF	Ra <3.2 µm

facing type (EN 1092-1)	
B1	Ra 3.2-12.5 µm
B2	Ra 0.8-3.2 µm
C	Ra 0.8-3.2 µm
D	Ra 0.8-3.2 µm
E	Ra 3.2-12.5 µm
F	Ra 3.2-12.5 µm
G	Ra 0.8-3.2 µm
H	Ra 0.8-3.2 µm

OPTIONS

- vent & blind plugs
- BDTV 911 valves

DRAWING AND DIMENSIONS STANDARD EXECUTIONS – RF FACING

ASME B16.5 - RF FACING

size	rating	facing	b (C1=1/4")	b (C1=1/2")	D	d
1"	cl. 150-2500	RF	20	35	51	27
1.5"	cl. 150-2500	RF	20	35	73	41
2"	cl. 150-2500	RF	20	35	92	53
3"	cl. 150-2500	RF	20	35	127	78
4"	cl. 150-2500	RF	20	35	157	102

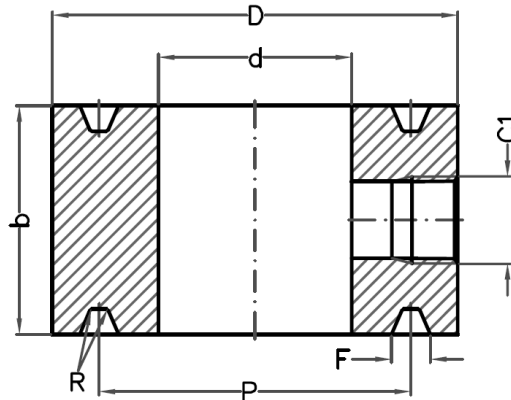
All dimensions in mm

EN 1092-1 - TYPE B1

size	rating	type	b (C1=1/4")	b (C1=1/2")	D	d
DN25	PN10-400	B1	20	35	68	29
DN40	PN10-400	B1	20	35	88	43
DN50	PN10-400	B1	20	35	102	54
DN80	PN10-400	B1	20	35	138	81
DN100	PN10-16	B1	20	35	158	104
DN100	PN25-400	B1	20	35	162	104

All dimensions in mm

DRAWING AND DIMENSIONS STANDARD EXECUTIONS – RJF FACING AND API



ASME B16.5 - RJF FACING

size	rating	facing	b (C1=1/4")	b (C1=1/2")	D	d	P	F	E	Ring #	R
1"	cl. 150	RJF	38	45	64	27	48	9	6	15	0.8
1"	cl. 300	RJF	38	45	70	27	51	9	6	16	0.8
1"	cl. 400-600	RJF	38	45	70	27	51	9	6	16	0.8
1"	cl. 900-1500	RJF	38	45	72	27	51	9	6	16	0.8
1"	cl. 2500	RJF	38	45	83	27	60	9	6	18	0.8
1,5"	cl. 150	RJF	38	45	83	41	65	9	6	19	0.8
1,5"	cl. 300	RJF	38	45	91	41	68	9	6	20	0.8
1,5"	cl. 400-600	RJF	38	45	91	41	68	9	6	20	0.8
1,5"	cl. 900-1500	RJF	38	45	92	41	69	9	6	20	0.8
1,5"	cl. 2500	RJF	38	50	114	41	83	12	8	23	0.8
2"	cl. 150	RJF	38	45	102	53	83	9	6	22	0.8
2"	cl. 300	RJF	38	50	108	53	83	12	8	23	0.8
2"	cl. 400-600	RJF	38	50	108	53	83	12	8	23	0.8
2"	cl. 900-1500	RJF	38	50	124	53	95	12	8	24	0.8
2"	cl. 2500	RJF	38	50	133	53	102	12	8	26	0.8
3"	cl. 150	RJF	38	45	133	78	114	9	6	29	0.8
3"	cl. 300	RJF	38	50	146	78	124	12	8	31	0.8
3"	cl. 400-600	RJF	38	50	146	78	124	12	8	31	0.8
3"	cl. 900	RJF	38	50	156	78	124	12	8	31	0.8
3"	cl. 1500	RJF	38	50	168	78	137	12	8	35	0.8
3"	cl. 2500	RJF	38	55	168	78	127	14	10	32	0.8
4"	cl. 150	RJF	38	45	171	102	149	9	6	36	0.8
4"	cl. 300	RJF	38	50	175	102	149	12	8	37	0.8
4"	cl. 400	RJF	38	50	175	102	149	12	8	37	0.8
4"	cl. 600	RJF	38	50	175	102	149	12	8	37	0.8
4"	cl. 900	RJF	38	50	181	102	149	12	8	37	0.8
4"	cl. 1500	RJF	38	50	194	102	162	12	8	39	0.8
4"	cl. 2500	RJF	38	55	203	102	157	17	11	38	0.8

All dimensions in mm

API 6A ISO 10423 - TYPE 6BX

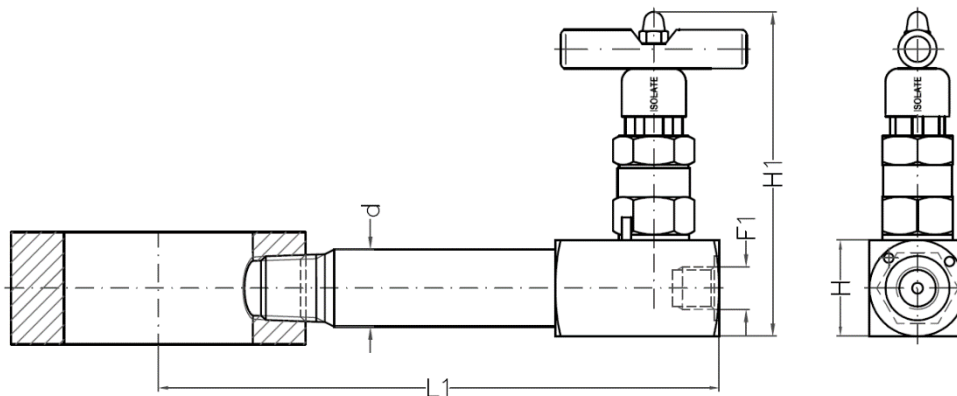
size	rating	b (C1=1/4")	b (C1=1/2")	D	d	P	F	ring	R	
1-13/16"	6BX	10M / 69MPa	38	50	105	46	66	11	BX-151	0.8
1-13/16"	6BX	15M / 103,5MPa	38	50	106	46	66	11	BX-151	0.8
1-13/16"	6BX	20M / 138MPa	38	50	117	46	66	11	BX-151	0.8
2-1/16"	6BX	10M / 69MPa	38	50	111	53	74	12	BX-152	0.8
2-1/16"	6BX	15M / 103,5MPa	38	50	114	53	74	12	BX-152	0.8
2-1/16"	6BX	20M / 138MPa	38	50	132	53	74	12	BX-152	0.8
2-9/16"	6BX	10M / 69MPa	38	50	132	66	89	14	BX-153	0.8
2-9/16"	6BX	15M / 103,5MPa	38	50	133	66	89	14	BX-153	0.8
2-9/16"	6BX	20M / 138MPa	38	50	151	66	89	14	BX-153	0.8
3-1/16"	6BX	10M / 69MPa	38	50	152	78	104	15	BX-154	0.8
3-1/16"	6BX	15M / 103,5MPa	38	50	154	78	104	15	BX-154	0.8
3-1/16"	6BX	20M / 138MPa	38	50	171	78	104	15	BX-154	0.8

All dimensions in mm

API 6A ISO 10423 - TYPE 6B

size	rating	b (C1=1/4")	b (C1=1/2")	D	d	P	F	ring	R	
2-1/16"	6B	2M / 13,8MPa	38	50	108	53	83	12	R or RX-23	0.8
2-1/16"	6B	3M / 20,7MPa	38	50	124	53	95	12	R or RX-24	0.8
2-1/16"	6B	5M / 34,5MPa	38	50	124	53	95	12	R or RX-24	0.8
2-9/16"	6B	2M / 13,8MPa	38	50	127	66	102	12	R or RX-26	0.8
2-9/16"	6B	3M / 20,7MPa	38	50	137	66	108	12	R or RX-27	0.8
2-9/16"	6B	5M / 34,5MPa	38	50	137	66	108	12	R or RX-27	0.8
3-1/8"	6B	2M / 13,8MPa	38	50	146	80	124	12	R or RX-31	0.8
3-1/8"	6B	3M / 20,7MPa	38	50	156	80	124	12	R or RX-31	0.8
3-1/8"	6B	5M / 34,5MPa	38	50	168	80	137	12	R or RX-35	0.8

All dimensions in mm

DRAWING AND DIMENSIONS STANDARD EXECUTIONS – FLUSH RING WITH BDTV911 EXTENDED VALVE

ASME B16.5 - RF FACING

size	facing	F1	L1	H1 (open)	H
1"	RF	1/4" / 1/2"	151	102	30
1.5"	RF	1/4" / 1/2"	162	102	30
2"	RF	1/4" / 1/2"	171	102	30
3"	RF	1/4" / 1/2"	189	102	30
4"	RF	1/4" / 1/2"	204	102	30

All dimensions in mm

EN 1092-1 - TYPE B1

size	type	F1	L1	H1 (open)	H
DN25	B1	1/4" / 1/2"	159	102	30
DN40	B1	1/4" / 1/2"	169	102	30
DN50	B1	1/4" / 1/2"	176	102	30
DN80	B1	1/4" / 1/2"	194	102	30
DN100	B1	1/4" / 1/2"	204	102	30
DN100	B1	1/4" / 1/2"	206	102	30

All dimensions in mm



Holland – United Kingdom – Romania – India – Thailand – Dubai – USA

To our knowledge, the information contained herein is accurate as of the date of this document. However neither Badotherm, nor its affiliates makes any warranty, express or limited, or accepts any liability in connection with this information or its use. This information is for technical skilled persons at their own discretion and risk and does not relate to the use of this product in combination with any other product. The user alone finally determines suitability of any information or material in contemplated use, the manner of use and whether any patents are infringed. This information gives typical properties only.

Badotherm reserves the right to make changes to the specifications and materials without prior notice. The latest version of the datasheet can be found on www.badotherm.com.

© 2001 Badotherm, all rights reserved. Trademarks and/or other products referenced herein are either trademarks or registered trademarks of Badotherm.